

LOT 5 - JAMISON W/ 2 CAR

TIMBER RANCH SUBDIVISION

481 NORTH 500 EAST

SALEM, UTAH

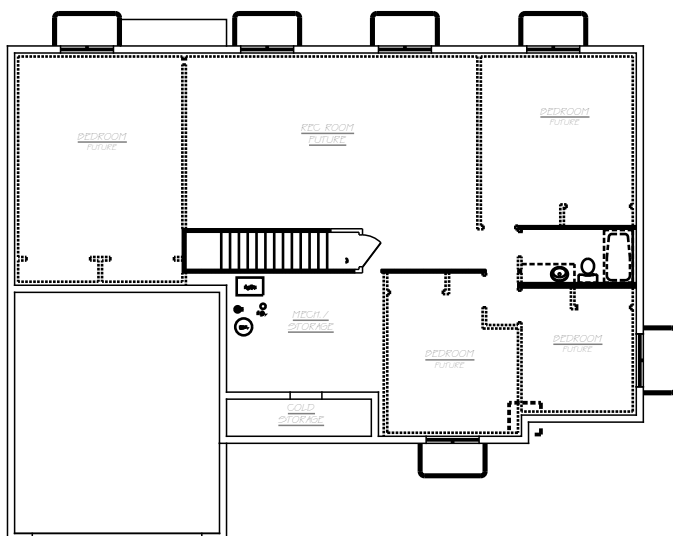
SQUARE FOOTAGE: 3653 TOTAL
1898 FINISHED
1755 UNFINISHED



BASEMENT PLAN

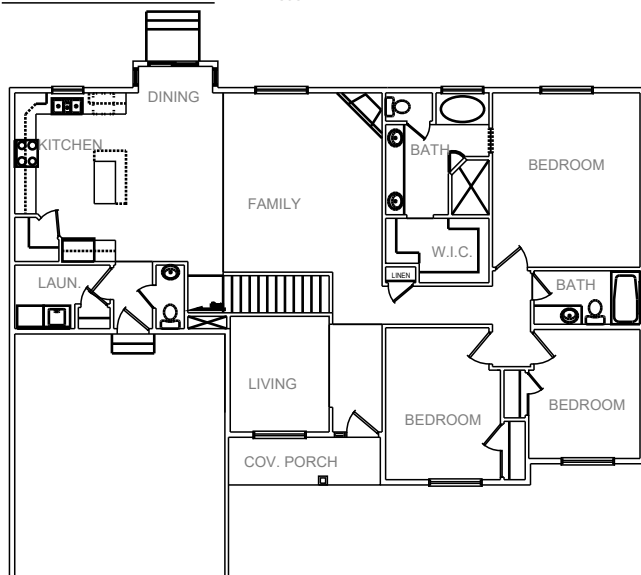
1755 S.F.

ORIGINAL SERIES



MAIN FLOOR PLAN

1898 S.F.



CAMBERLANGO
DEVELOPMENT

PLEASE NOTE: Square footage and measurements noted are approximate. All drawings of exteriors and floor plans are artist's renditions and may vary from actual product. Plans are subject to change to comply with city and community cc&r ordinances. Placement of home on lot is done at seller's discretion. All information on this sheet is subject to change without notice.