

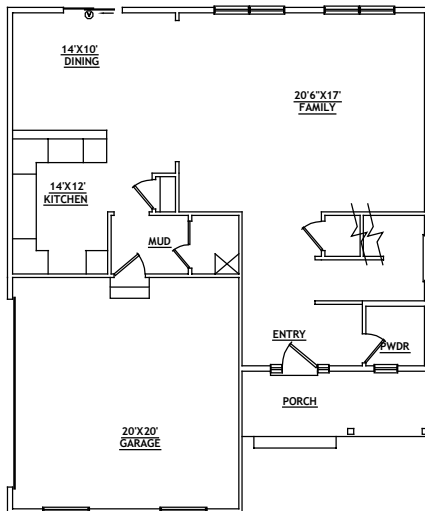
LOT 66 - WILLOW B

QUAIL VALLEY SUBDIVISION
385 NORTH 1400 WEST
SPRINGVILLE, UTAH

SQUARE FOOTAGE: 2064 TOTAL
2064 FINISHED
0 UNFINISHED

MAIN FLOOR PLAN

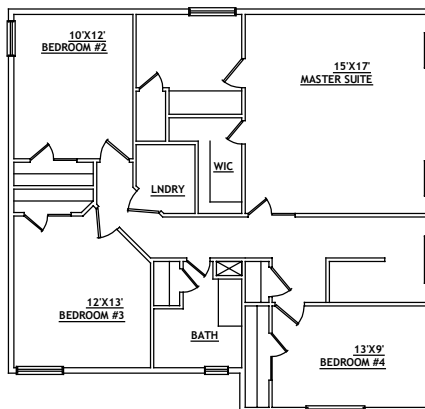
958 S.F.



ORIGINAL SERIES

SECOND FLOOR PLAN

1,106 S.F.



PLEASE NOTE: Square footage and measurements noted are approximate. All drawings of exteriors and floor plans are artist's renditions and may vary from actual product. Plans are subject to change to comply with city and community cc& ordinances. Placement of home on lot is done at seller's discretion. All information on this sheet is subject to change without notice.