

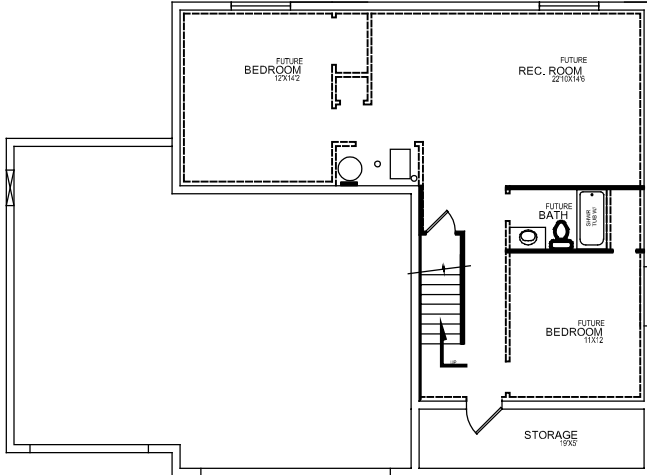
LOT 7 - ALBANY w/3rd CAR

PG SUBDIVISION
910 NORTH 600 WEST
PLEASANT GROVE, UTAH

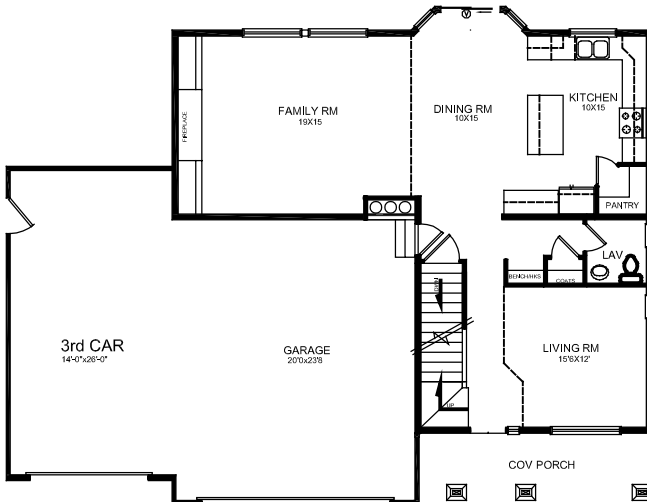
SQUARE FOOTAGE: 3266 TOTAL
2340 FINISHED
926 UNFINISHED

BASEMENT PLAN

926 S.F.

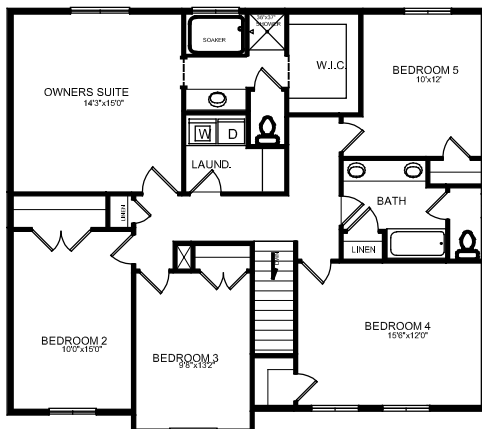


MAIN FLOOR PLAN 1000 S.F.



SECOND FLOOR PLAN

1340 S.F.



ORIGINAL SERIES



CAMBERLANGO
DEVELOPMENT

PLEASE NOTE: Square footage and measurements noted are approximate. All drawings of exteriors and floor plans are artist's renditions and may vary from actual product. Plans are subject to change to comply with city and community cc&r ordinances. Placement of home on lot is done at seller's discretion. All information on this sheet is subject to change without notice.