

# LOT 19 - SAWYER w/3rd CAR

QUAIL BROOK SUBDIVISION  
589 NORTH 350 EAST  
SPRINGVILLE, UTAH

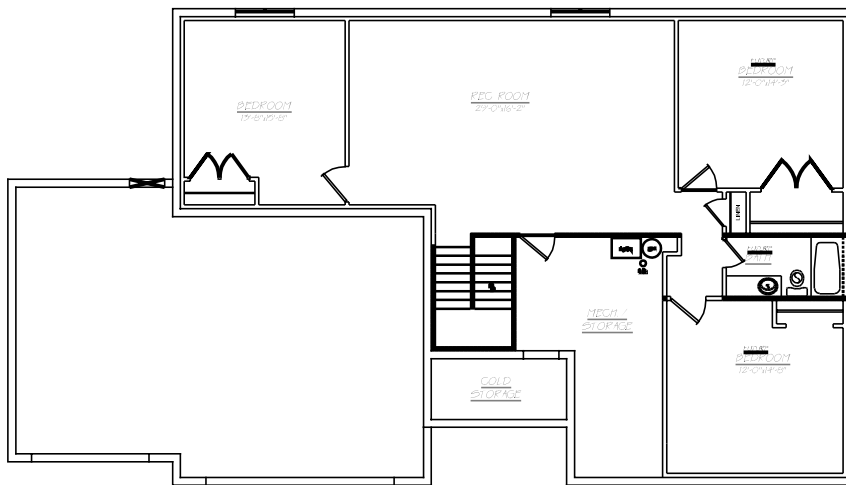
SQUARE FOOTAGE: 3344 TOTAL  
2476 FINISHED  
868 UNFINISHED



BASEMENT PLAN

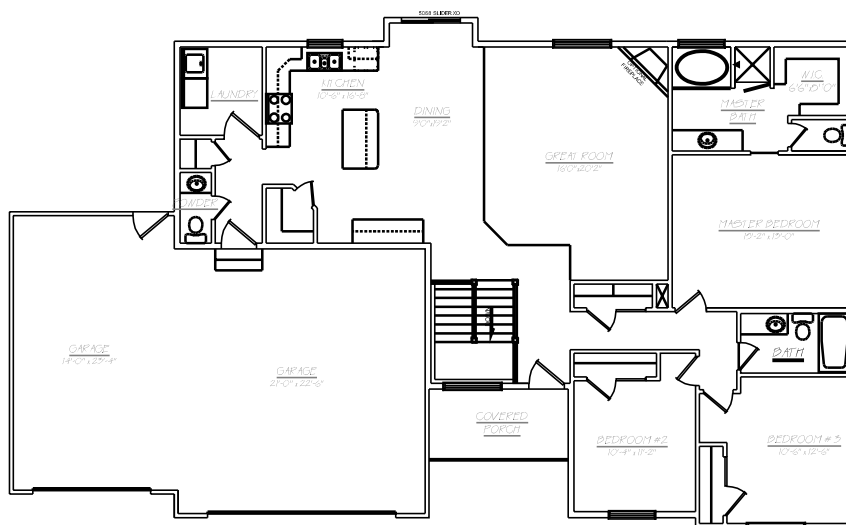
1601 S.F.

ORIGINAL SERIES



MAIN FLOOR PLAN

1743 S.F.



**CAMBERLANGO**  
DEVELOPMENT

PLEASE NOTE: Square footage and measurements noted are approximate. All drawings of exteriors and floor plans are artist's renditions and may vary from actual product. Plans are subject to change to comply with city and community cc&r ordinances. Placement of home on lot is done at seller's discretion. All information on this sheet is subject to change without notice.