

LOT 13 - SAWYER w/2 CAR

QUAIL BROOK SUBDIVISION
332 EAST 700 NORTH
SPRINGVILLE, UTAH

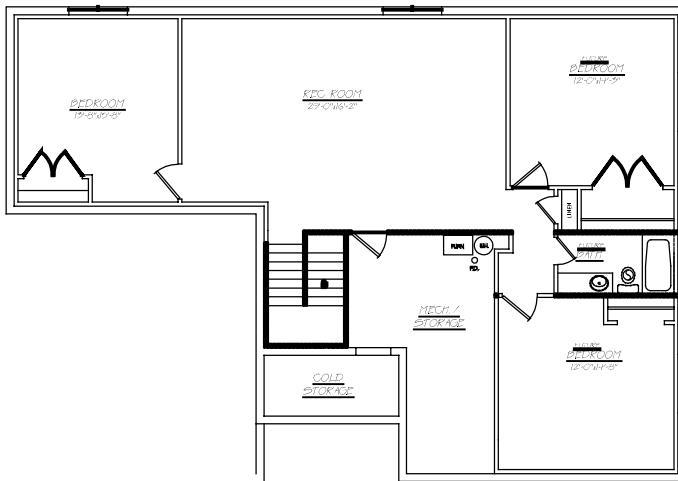
SQUARE FOOTAGE: 3344 TOTAL
2476 FINISHED
868 UNFINISHED



BASEMENT PLAN

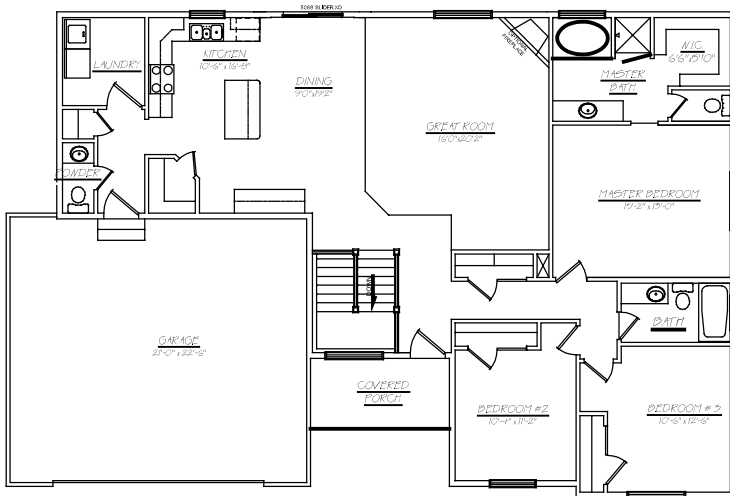
1601 S.F.

ORIGINAL SERIES



MAIN FLOOR PLAN

1743 S.F.



CAMBERLANGO
DEVELOPMENT

PLEASE NOTE: Square footage and measurements noted are approximate. All drawings of exteriors and floor plans are artist's renditions and may vary from actual product. Plans are subject to change to comply with city and community cc&r ordinances. Placement of home on lot is done at seller's discretion. All information on this sheet is subject to change without notice.